


Diploma in Banking





Table of contents

- 
- 2 Overview
 - 3 Interest & Benefits
 - 4 Programme Levels & Structure
 - 5 Registration & Fees
 - 6 Eligability & Exams





Overview

Diploma in Banking

The Diploma in Banking Programme (DIB) is a self-study programme that aims to supplement and expand knowledge of the banking profession. It is ideal for banking professionals and anyone interested in a career within the banking sector. The Programme's content exposes students to the fundamentals of Banking Practice, as well as other topics that include Customer Service, Business Communication, Human Resource Management, Marketing and Information Technology.

DIB graduates without CAPE/GCE Advanced Level passes are also eligible for admission to the UWI St. Augustine to pursue any undergraduate degree in the Faculty of Social Sciences, including the BSc Banking and Finance. Graduates who maintained a B+ average throughout the programme are eligible for exemptions and credits within selected degree programmes.

Interest and Benefits

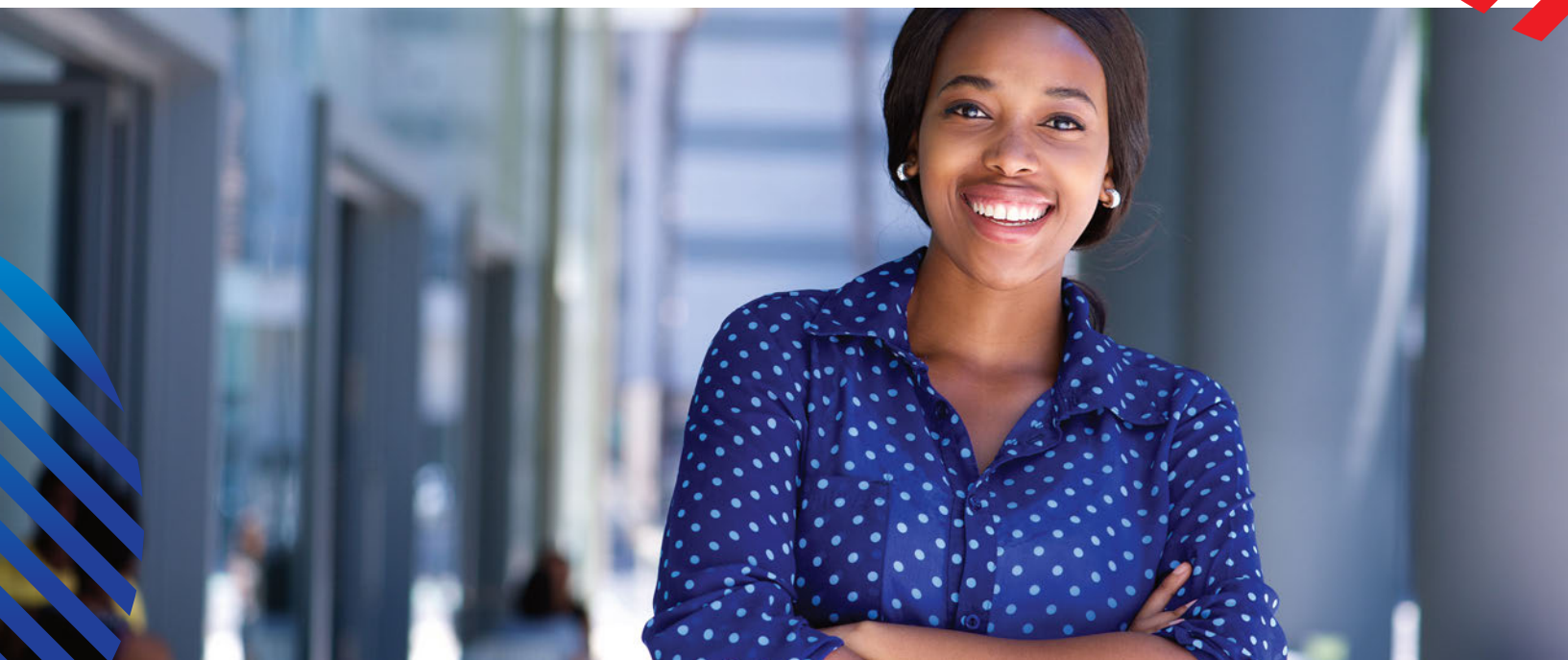
Who should do the DIB Programme?

The DIB programme is ideal for anyone with an interest in the Banking profession. However, it can be especially helpful for:

- Persons without CAPE/GCE Advanced Level qualifications who want to pursue a university degree at the UWI
- Support staff interested to advance knowledge of the Banking industry
- Supervisors, team leaders, aspiring managers

Benefits of the DIB Programme

- Gain admission to the UWI without Advanced Level qualifications
- Obtain an industry-recognized professional qualification that can improve opportunities for career advancement
- Increased technical knowledge of the Banking system and profession



Programme Levels & Structure



The Certificate Level

Comprises six (6) modules

Customer Service & Business Communication
Introduction to Banking
Economics
Accounting
Banking Law
Introduction to Lending & International Business

The Diploma Level

Comprises eight (8) modules

Financial Analysis
Monetary & Financial Systems
Principles of Management
Banking Practice (Operations/Lending/Finance of International Trade)
Human Resource Management
Marketing Management
Financial Management
Information Technology



Registration

To register for the Diploma in Banking Programme, please download, print and complete the following forms and return them to our office along with complete payments of the registration, annual membership and examination fees. The DIB Prospectus is also available for download. The Membership Application form can be found in the Membership section of this website. Payments can be made via debit card/credit card or certified cheque. Personal cheques and cash are not accepted by the IBF.

Deadline for registration and examination sitting dates:

Kindly contact our office at **info@ibf.org.tt** to acquire the current examination sitting dates.

Fees

Registration Fee

(one-time payment)

Bankers \$337.50

Non-Bankers \$675.00

Membership Subscription

(annual payment)

Bankers \$225.00

Non-Bankers \$450.00

Programme Fee

(per level payment)

Certificate Level \$635.86

Diploma Level \$890.21

Deferral Fee* \$84.38

All fees are VAT inclusive

* Exam fees are non-refundable. Deferrals are ONLY granted in cases of serious illness or extenuating circumstances and at the sole discretion of IBF. Such requests must be supported by evidence and validated by IBF. Students will be charged a deferral fee.

Eligibility

Candidates for the DIB must meet the following entry requirements:

- Five CXC/GCE Ordinary Level passes, including English Language and Mathematics or a Mathematics-related subject, Grades I or II (Grade III accepted from 1998)
- Up-to-date IBF membership subscription

Academic Guidance

The DIB Programme was developed for self-study and as such, classes are not offered by the IBF. However, if you prefer to access taught classes for the programme, please contact us for a list of our recommended tuition providers.

Examinations

Examinations are held twice per year over the course of one week in the months of April and September.



Address

Level 1 Invader's Bay Tower,
Invaders Bay, Off Audrey Jeffers Highway,
Port of Spain

Contact Us

Admin

Tel: (868) 235-6291 **Ext:** 1005

Mobile: (868) 321-9330

Email: admin@ibf.org.tt

Marketing

Tel: (868) 235-6291 **Ext:** 1002

Email: marketing@ibf.org.tt

ibf.org.tt   